

The New Sports, Creative and Performing Arts Facility



What is being built?

- Sports Hall
- Performance Hall
- Music suite
- New reception
- Refectory
- Open Learning Centre
- New classrooms
- Fitness Suite
- New gym, dance studio, art classroom & exhibition space
- New netball courts
- New sports pitch
- Sympathetically designed external landscaping



High quality materials comprising:

- Solid Bath stone masonry
- Pre-weathered zinc cladding panels
- Aluminium/timber composite glazing system designed to mitigate sun glare.



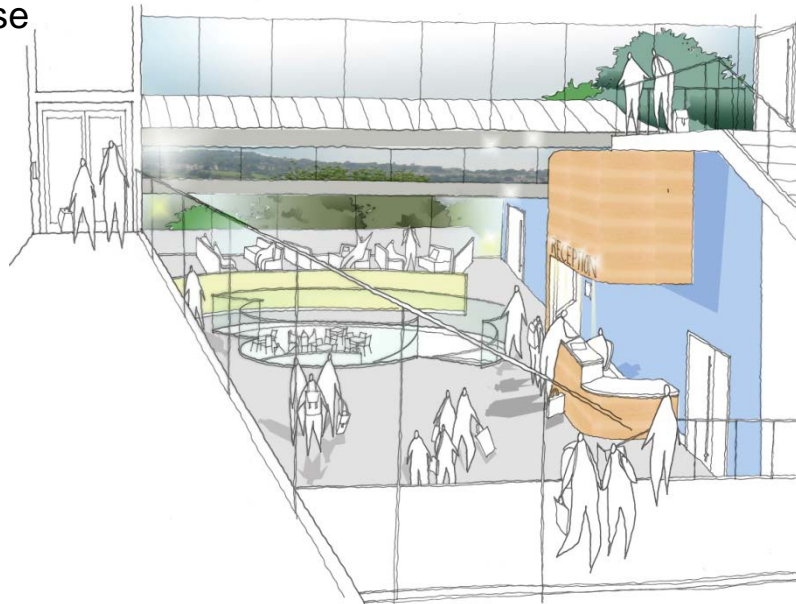
Sustainable design comprising:

- Ground Source heat pump installation
- Use of sustainable resourced materials.
- Rainwater drainage management system (SUDS)



Views within the main concourse & 'Heart'

View from just within main entrance, looking down towards the reception and 'Heart' of the building

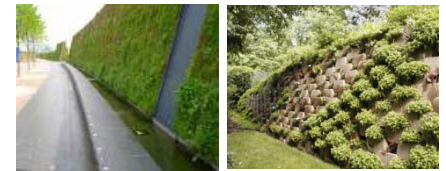


At the Heart of the school, the staircases and galleries allow clear views to the various spaces beyond.

From reception, visitors can easily be directed towards various departments including the link into the existing school.



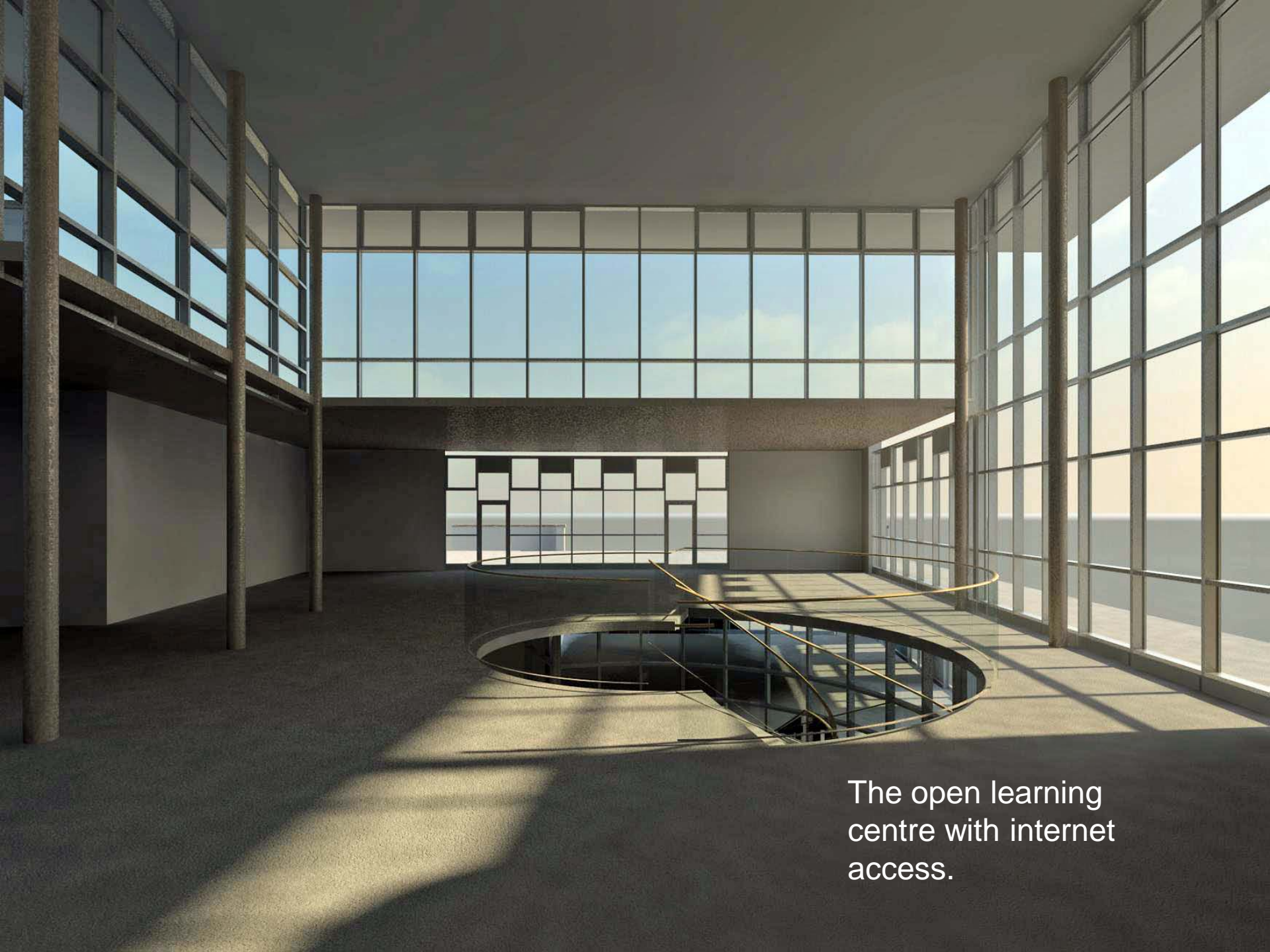
View from 'Heart' of building at level 3 looking across the central stair and back towards reception and the entrance stair



The lower faces of the scheme along the Lower Oldfield Park Rd can have planted green retaining walls which can echo the existing boundary along the sports pitch.



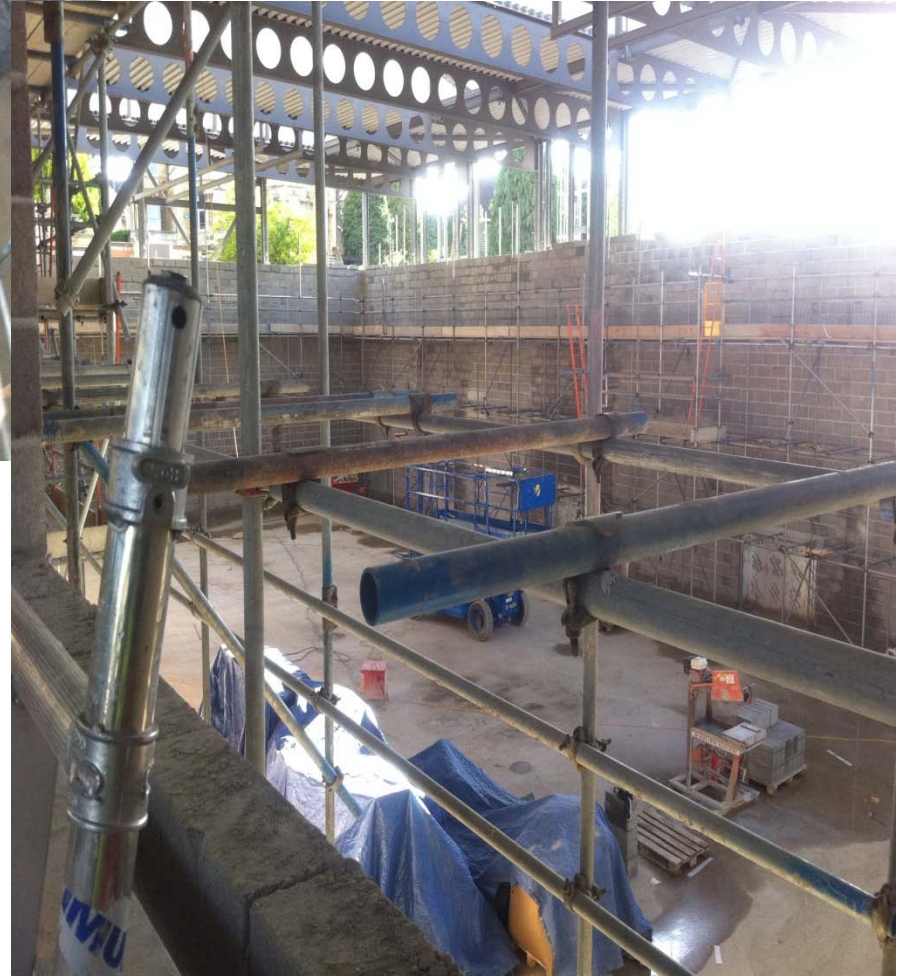
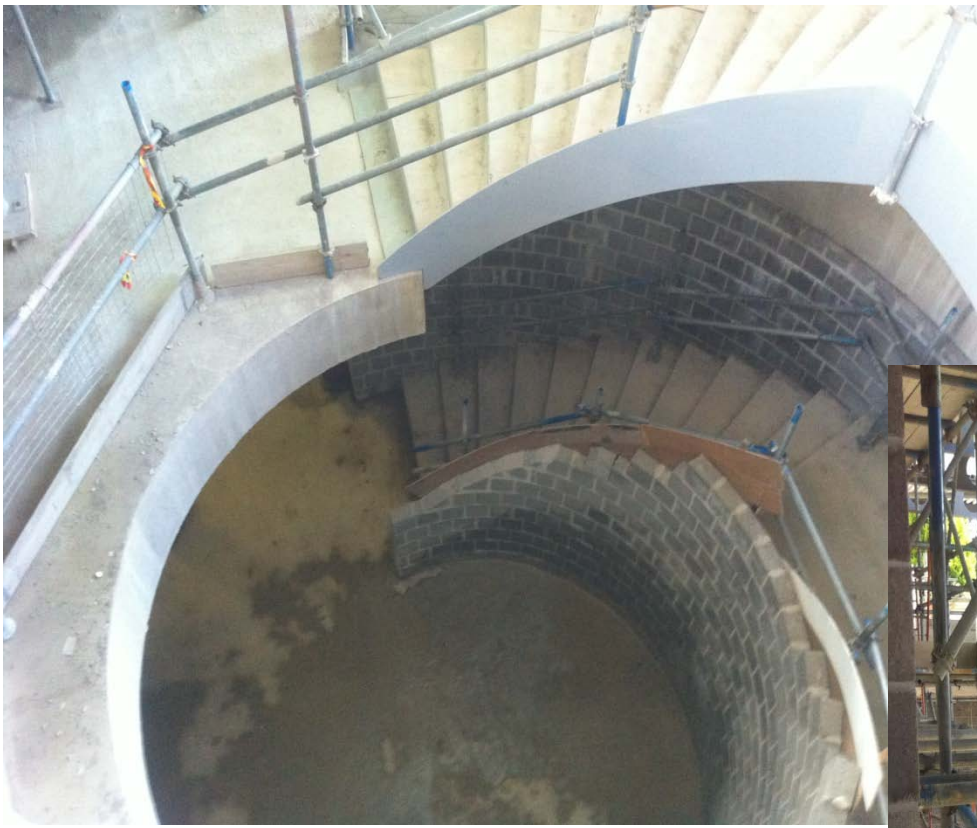
The heart of the school, reception on the left and looking towards the main entrance



The open learning
centre with internet
access.

As at September 2010







ATTENTION: NO USE
OF LIFTING EQUIPMENT
ON THIS SITE
UNLESS THE
OPERATOR IS
PROPERLY TRAINED
AND CERTIFIED
BY THE MANUFACTURER
OR A QUALIFIED
PERSONNEL.

NO PARKING
ANYTIME

NO PARKING
ANYTIME

TAKEUCHI
DAVIS
SELF DRIVE

MANITOU
KANGAROO
4320-RT2



It is planned to complete the building for April 2011.